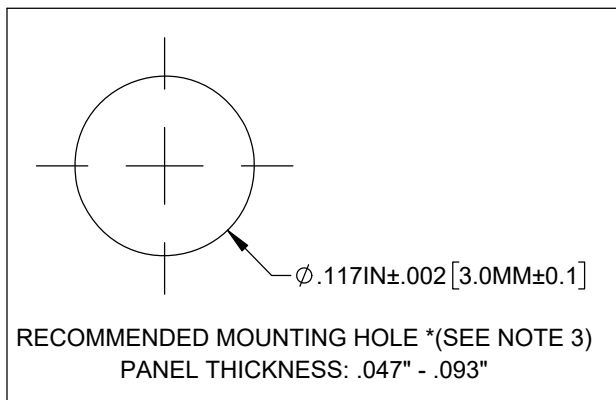


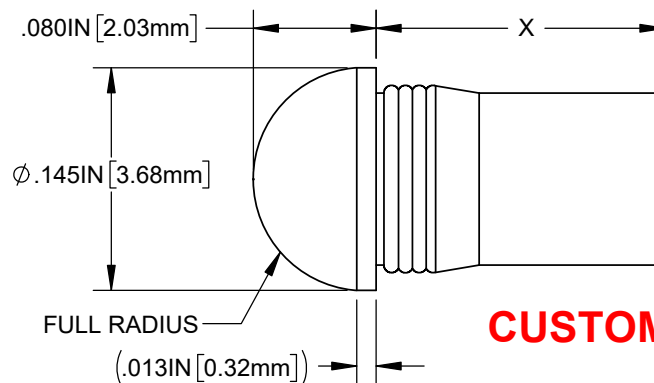
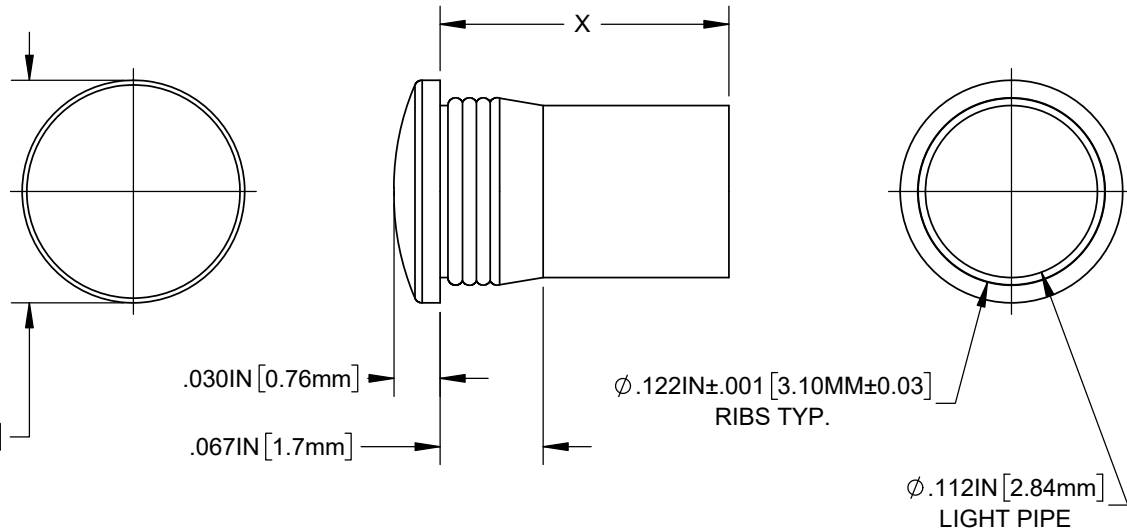
NOTES:

1. MATERIAL: POLYCARBONATE, UL94V-0, CLEAR.
2. OPERATING TEMPERATURE: -40°C to 120°C.
3. THE RECOMMENDED REFERENCED MOUNTING HOLE IS SPECIFIED FOR EASE OF ASSEMBLY AND IP54 APPLICATION REQUIREMENTS AS TESTED BY BIVAR. THE LIGHT PIPE(S) MUST BE INSERTED FIRMLY PERPENDICULAR INTO THE PANEL OR SURFACE'S HOLE OPENING WITH THE FLANGE FULLY FLUSHED AFTER PANEL INSTALLATION. ADJUSTMENTS TO THESE MOUNTING HOLE DIMENSIONS CAN BE MADE BASED ON AVAILABLE TOOLS, EQUIPMENT, PANEL MATERIAL, AND MFG CAPABILITIES TO PROPERLY FIT THE LIGHT PIPE(S) IN THE PANEL OR SURFACE FOR ITS INTENDED APPLICATION.



PART NO.	X = BODY LENGTH	LENS FACE
GLP2-100-R-54	0.100IN [2.54mm]	ROUND
GLP2-125-R-54	0.125IN [3.2mm]	ROUND
GLP2-215-R-54	0.215IN [5.5mm]	ROUND
GLP2-250-R-54	0.250IN [6.4mm]	ROUND
GLP2-350-R-54	0.350IN [8.9mm]	ROUND
GLP2-375-R-54	0.375IN [9.5mm]	ROUND
GLP2-500-R-54	0.500IN [12.7mm]	ROUND
GLP2-625-R-54	0.625IN [15.9mm]	ROUND
GLP2-750-R-54	0.750IN [19.0mm]	ROUND
GLP2-1000-R-54	1.000IN [25.4mm]	ROUND
GLP2-1200-R-54	1.200IN [30.5mm]	ROUND
GLP2-100-D-54	0.100IN [2.54mm]	DOME
GLP2-125-D-54	0.125IN [3.2mm]	DOME
GLP2-250-D-54	0.250IN [6.4mm]	DOME
GLP2-313-D-54	0.313IN [7.9mm]	DOME
GLP2-350-D-54	0.350IN [8.9mm]	DOME
GLP2-375-D-54	0.375IN [9.5mm]	DOME
GLP2-500-D-54	0.500IN [12.7mm]	DOME
GLP2-625-D-54	0.625IN [15.9mm]	DOME
GLP2-750-D-54	0.750IN [19.0mm]	DOME
GLP2-1200-D-54	1.200IN [30.5mm]	DOME
GLP2-7MM-D-54	0.276IN [7.0mm]	DOME

Ø.145IN [3.68mm]



ROUND FACE



DOME FACE

REVISIONS			
REV.	DESCRIPTION	DATE	APPROVED
A	ENGINEERING RELEASE	06/07/24	A.V.
B	REDEFINE CTQ	9/19/2024	A.V.
C	UPDATED DIMENSIONS	10/18/2024	A.V.
D	UPDATE PN LIST	1/14/2025	A.V.
D1	UPDATED MOUNTING HOLE NOTE	4/16/2025	A.V.

CUSTOMER USE DRAWING

STANDARD TOLERANCE (UNLESS OTHERWISE SPECIFIED)		BIVAR®	
DECIMALS	ANGULAR		
.X ± .1	X° ± 1°		
.XX ± .01			
.XXX ± .005			
DESIGNED: A. VALDEZ	DATE: 6/7/2024	TITLE: PRESS-FIT PANEL MOUNT LIGHT PIPE (D/R), IP-54	
REVISD: K. BARON	DATE: 4/16/2025	DRAWING NO: GLP2-XXX-Y-ZZ	REVISION: D1
CHECKED: R. PEREYRA	DATE: 4/16/2025	SHEET SIZE A	CAGE CODE: 32559
		SCALE: 8:1	SHEET # 1 OF 1
CAD GENERATED DOCUMENT, DO NOT MEASURE DRAWING			